

47/81

TIMBERWALK II SECTION FOUR

THIS INSTRUMENT WAS PREPARED BY
KEITH AND SCHNARS, P.A.
ENGINEERS-PLANNERS-SURVEYORS
1115 N.E. 4TH AVENUE
FORT LAUDERDALE, FLORIDA

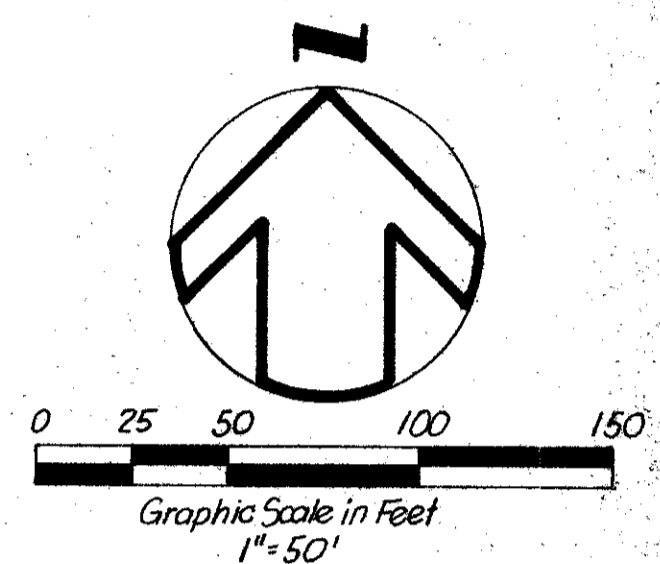
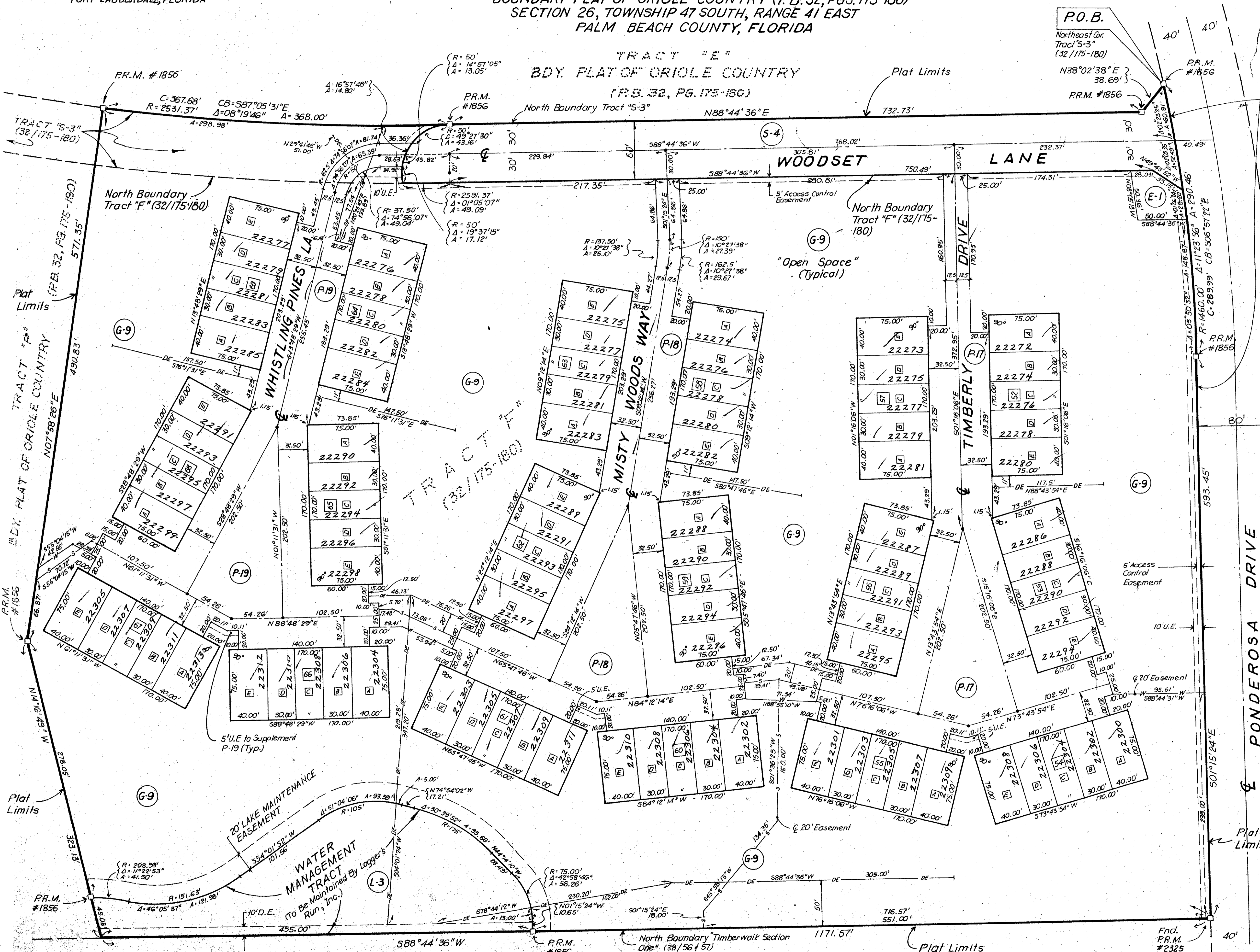
A PORTION OF LOGGERS RUN, A P.U.D.
BEING A RESUBDIVISION OF A PORTION OF TRACTS "F" & "S-3"
BOUNDARY PLAT OF ORIOLE COUNTRY (P.B. 32, PGS. 175-180)
SECTION 26, TOWNSHIP 47 SOUTH, RANGE 41 EAST
PALM BEACH COUNTY, FLORIDA

81

STATE OF FLORIDA
COUNTY OF PALM BEACH

THIS PLAT WAS FILED FOR RECORD AT THE DAY OF 1984, AND DULY RECORDED IN PLAT BOOK ON PAGES AND

JOHN B. DUNKLE
CLERK OF CIRCUIT COURT



- SURVEY NOTES:**
- 1) \square Indicates Permanent Reference Monument and is a 6" dia. x 24" Concrete Monument with a brass disc, stamped Keith and Schnars, #1856.
 - 2) \bullet Indicates Permanent Control Point and is a nail in brass survey cap stamped Keith and Schnars.
 - 3) Survey Data in Field Book: 289.
 - 4) \square Indicates Unit Number.
 - 5) \square Indicates Cluster Number.
 - 6) $\textcircled{G-9}$ Indicates Parcel Number.
 - 7) U.E. Indicates Utility Easement.
 - 8) Bearings shown hereon are relative to the Boundary Plat of Oriole Country (32/175 to 180) N.Bdy. Tract S-3.
 - 9) D.E. Indicates Drainage Easement.
 - 10) $\text{---}w\text{---}$ Indicates centerline 12' wide waterline easement, unless otherwise noted.
 - 11) $\text{---}s\text{---}$ Indicates centerline 12' wide sewer line easement, unless otherwise noted.
 - 12) $\text{---}de\text{---}$ Indicates centerline 12' wide drainage easement.
 - 13) No buildings or any kind of construction shall be placed on utility or drainage easements.
 - 14) No structures, trees or shrubs shall be placed on drainage easements.
 - 15) Approval of landscaping on utility easements other than water and sewer shall be only with the approval of all utilities occupying same.

LOGGERS RUN P.U.D. DATA

MULTI-FAMILY	229,500 Sq. Ft.	5.2686 Ac.
PARCEL E-1	2,265 Sq. Ft.	0.0520 Ac.
PARCEL G-9	541,628 Sq. Ft.	12.4341 Ac.
PARCEL L-3	39,810 Sq. Ft.	0.9139 Ac.
PARCEL P-17, P-18, P-19	164,737 Sq. Ft.	3.7618 Ac.
PARCEL S-4	49,224 Sq. Ft.	1.1300 Ac.
GROSS AREA	1,027,164 Sq. Ft.	23.5804 Ac.

NUMBER OF UNITS 90
UNITS PER GROSS ACRE 3.52

47/81 0215-303
T 2 OF 2

TIMBERWALK SECTION ONE (P.B. 38, PG. 56 & 57)

Timberwalk II Sec 4